

Meet the Residential Team



Andrew Robinson
Head Of Care



Sharan Brain
Deputy Head of Care
Care Officer in Cotswold



Kerry Webb
Care Officer
Seymour



Sally Daffin
Acting Care Officer
Dilwyn



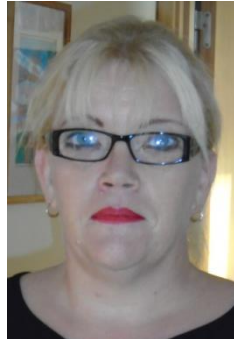
Clare Lane
Acting Care Officer
Seymour



Ruth Barton
Residential Teacher



Tracey Norris
Care Assistant
Dilwyn



Lisa Armstrong
Care Assistant



Clare Cresswell
Care Assistant
Seymour



Kim Radburn
Care Officer Night



Matt Webb
Care Officer Night