

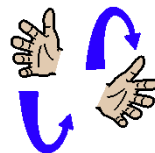
# Signing resources available:

## Booklets we have designed:

### Signing Manuals



### First Signs



Signing at the Vale of Evesham School



Focus: Signing sign of the week during a whole school assembly

For more information and course prices contact-

Email: [wcook@valeofevesham.worcs.sch.uk](mailto:wcook@valeofevesham.worcs.sch.uk)



Vale of Evesham School  
Four Pools Lane, Evesham  
Worcestershire, WR11 1BN  
Phone: (01386) 443367  
Fax: (01386) 765787

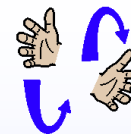
[www.valeofevesham.worcs.sch.uk](http://www.valeofevesham.worcs.sch.uk)



Vale of Evesham

# Signing

At the Vale of Evesham school we use 'signalong' which is a sign supported system, enabling individual expressive and receptive language.



Signs are always used with the spoken word and only the keywords are signed.

This is to help the child focus on the information, carrying words in a sentence and therefore helps them to understand the main point of the message.



Wendy Cook  
'signalong' tutor

## Courses:

- Courses are tailored to meet your needs.
- They are available for staff, parents, carers and friends.
- Nursery and school establishments are more than welcome.

The courses available are:

### Workshops -

These range from 1 - 7.5 hours and are usually for those new to sign supported communication.

### Half day introductory courses -

These are frequently topic based depending on the needs of the group.

It covers a brief history, philosophy, and methodology of 'signalong' before the teaching of 50 key words, however you will learn the necessary skills to read and produce any sign from the 70 manuals available through 'signalong'.



## Foundation Course:

### Foundation Course -

- This is 15 hours long, usually delivered over a 10 week period.
- It covers the whole of the vocabulary in the chosen manual (frequently phase 1 approximately 360 words).

#### Lower School Pupils learning to sign



## Pupil Signing



Mixing



Brushing



Drinking